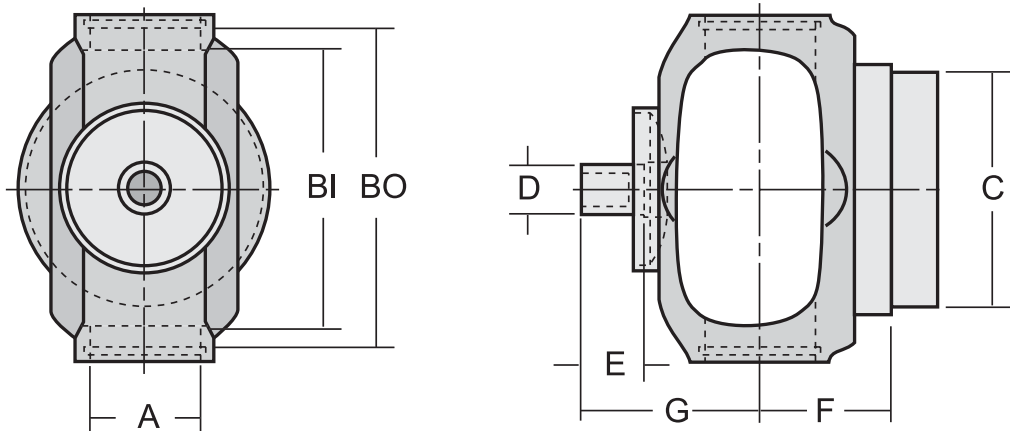


NOW AVAILABLE!

R3-28-3208

STUD YOKE (Weld In Style)



RDL Part Number	A Bearing Diameter	B Snap Ring Lockup - (O/I)	Fits Tube Dia. / Wall	C Butt Diameter	D / E Ball Stud Dia. / Length	F Centerline to Weld	G Centerline to Stud	OEM Dust Shield Design
-----------------	-----------------------	-------------------------------	-----------------------	--------------------	----------------------------------	-------------------------	-------------------------	------------------------

1350 Series (Spicer Style Shafts)

Use RDL Kit - K178

R3-28-3208**	1.188	3.622 - (O)	2.000 / .120	1.770	.500 / .625	1.469	1.744	Rubber
R3-28-3198	1.188	3.622 - (O)	2.500 / .095	2.316	.500 / .625	1.469	1.744	Rubber
R3-28-3132	1.188	3.622 - (O)	2.500 / .083	2.344	.500 / .625	1.469	1.744	Rubber
R3-28-3133	1.188	3.622 - (O)	2.750 / .083	2.594	.500 / .625	1.469	1.744	Rubber
R3-28-1327	1.188	3.622 - (O)	3.000 / .083	2.844	.500 / .625	1.469	1.744	Rubber
R3-28-1527	1.188	3.622 - (O)	3.500 / .083	3.342	.500 / .625	1.469	1.744	Rubber

THE SOLUTION COMPANY

"PROVIDING QUALITY, VALUE AND SERVICE FOR OVER 60 YEARS"

RockfordDriveline.com / 815-962-1411